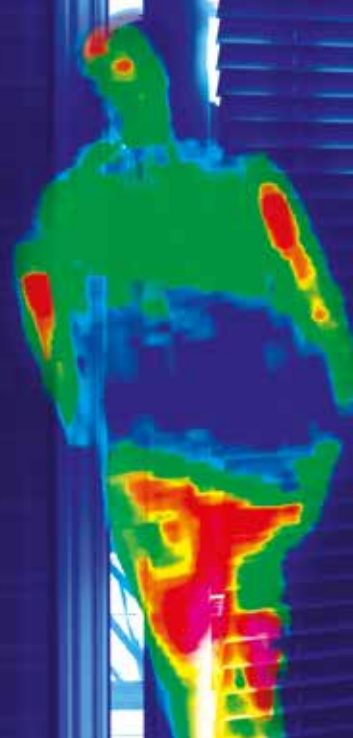


MEMS THERMAL SENSOR D6T

High Sensitivity Enables Detection of Stationary Human Presence

Main features

- **HIGH SENSITIVITY:** High SNR by Omron unique design
- **HIGH ACCURACY:** High accuracy in temperature sensing
- **DIGITAL OUTPUT:** Outputs temperature data by I2C interface



Sensor type	D6T-1A-01	D6T-1A-02	D6T-8L-09/09H	D6T-44L-06/06H	D6T-32L-01A	
Appearance					NEW	
Number of elements	1 (1 x 1)		8 (1 x 8)	16 (4 x 4)	1024 (32 x 32)	
Size (mm)	(L : W : H) = (12.0 : 11.6 : 9.2)		(L : W : H) = (12.0 : 11.6 : 10.7)	(L : W : H) = (18.0 : 14.0 : 8.8)	(L : W : H) = (18.0 : 14.0 : 9.9)	
View angle	X direction	58.0°	26.5°	54.5°	44.2°	90.0°
	Y direction	58.0°	26.5°	5.5°	45.7°	90.0°
Object temperature Detection range	5 – 50°C	-40 – 80°C	09:5 – 50°C 09H:5 – 200°C	NEW 06:5 – 50°C 06H:5 – 200°C	NEW 0 – 200°C	
Reference temperature Detection range	5 – 45°C	-40 – 80°C	5 – 45°C	5 – 45°C	0 – 80°C	
Communication	I2C					
Size of measurement area						
Distance 1m	X direction	111 cm	47 cm	103 cm	81 cm	200 cm
	Y direction	111 cm	47 cm	10 cm	84 cm	200 cm
Image of detection						



Features

- Incorporate a state-of-the-art MEMS thermopile, a customized design sensor ASIC, a signal processing micro-processor into a tiny package
- It measures the surface temperature of materials by detecting the intensity of infrared radiation
- Omron's unique MEMS and ASIC technology achieve a high SNR.
- Superior noise immunity with a digital output.
- High-precision area temperature detection with low crosstalk field of view characteristics.

Applicable for



Building automation



Security systems



Lighting systems



Home appliances



Factory automation



Energy management



Non-contact temperature measurement



Human detection



**For more information,
please contact:**

info-components-eu@eu.omron.com

**Omron Electronic
Components Europe B.V.**

Wegalaan 57
2132 JD, Hoofddorp
The Netherlands
Tel: +31 23 568 1200